



**ATLANTIC SALMON  
(SALMO SALAR)**



### Whole Fish Hon

Whole gutted, head on, frozen IQF.  
Size 1-2, 2-3, 3-4, 4-5, 5-6, 6-7, 7-8,  
8-9, 9 kg + 25 kg boxes.



### Fillet Trim - C

Skin on fillet, frozen.  
Size 1-2, 2-3, 3-4 lbs. 10 and 25 kg boxes.



### Fillet Trim - E

Skinless fillet, frozen IQF.  
Size 1-2, 2-3, 3-4 lbs. 10 and 25 kg boxes.

Also known as Salmo Salar, or simply salmon, Atlantic salmon is one of the better known and best-selling salmonids in the whole world. It is born in freshwater, then migrates to the sea, and in turn returns to rivers for mating.

Atlantic salmon is a large fish, and has a long body of a characteristic silver color with black spots. It has excellent qualities as its meat is very versatile for any kind of cut required, and it has a striking color with shades of pink and orange, very characteristic in this species.

Salmon is very good for our health, as it is rich in protein and Omega-3, which help to lower the cholesterol and triglycerides levels in our bodies and consequently help prevent heart disease-related illnesses. Chile is an ideal setting for salmon farming because of the purity and freshness of the waters in the south of the country that help to develop a healthy and high quality product.

\*\*\*\*\* Packaging - 25 kg x 880 ctn | FCL load - 22,000 kg \*\*\*\*\*





## RAINBOW TROUT (ONCORHYNCHUS MYKISS)



### HG

Gutted, headless, frozen IQF.  
Size 0-2, 2-4, 4-6, 6-9, 9+ lbs. 25 kg box.



### Fillet Trim - C

Skin on fillet, frozen IOF.  
Size 1-2, 2-3, 3-4 lbs. 10 and 25 kg box.



### Fillet Trim - E

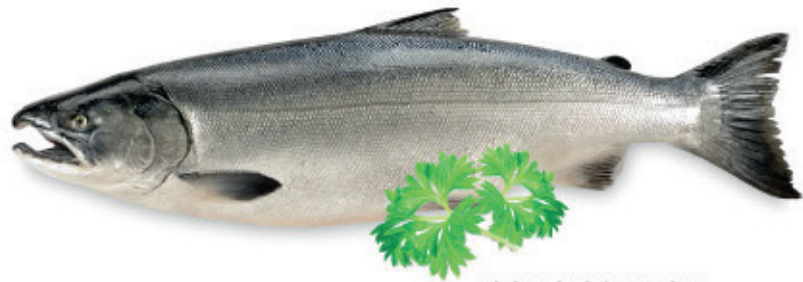
Skinless fillet, frozen IOF.  
Size 1-2, 2-3, 3-4 lbs. 10 and 25 kg box.

\*\*\*\*\* FCL load - 22,000 kg \*\*\*\*\*

Known scientifically as *Oncorhynchus mykiss*, the sea trout is also known simply as trout or "steelhead". The sea trout is of the salmonids family, just like Atlantic and Pacific salmon. It is a fish that inhabits cold, clean waters, which is why southern Chile is perfect for the farming of this species. It is characterized by its silver body and blue-green shades on its back. It is also recognized by a characteristic red line along the center of its body. Its meat is flavorsome and striking because of the unmistakable orange color that differentiates it from other salmonids. Just like salmon, sea trout is an excellent and very nutritious protein for human consumption because of its high levels of Omega-3.

Chile is the main producer of sea trout in the world and it is shipped principally to Asia, Russia, North America and Brazil. Its excellent color and refined flavor make this species the fish of choice for sushi cuisine.





**COHO SALMON  
(ONCORHYCHUS KISUCH)**

Known scientifically as *Oncorhynchus kisuch*, the coho salmon is also known as silver salmon. This salmon is mainly produced in Chile between October and March. Its characteristic orange color and moderately fatty meat are attributes that make it a tasty ingredient of any meal.

It is an excellent source of proteins and Omega-3, as its consumption can help to prevent heart-related illnesses. It is in high demand in Japan, as it is sold as value-added products such as smoked salmon.



**HG**

Whole gutted, headless, frozen IQF.  
Size 0-2, 2-4, 4-6, 6-9 lbs. 25 kg box.

\*\*\*\*\* FCL load - 22,000 kg \*\*\*\*\*



**Whole Trim - C**

Fillet skin on, frozen VP.  
Size 1-2, 2-3, 3-4 lbs. 10 and 25 kg box.



**Whole Trim - E**

Fillet skin on, frozen VP.  
Size 1-2, 2-3, 3-4 lbs. 10 and 25 kg box.





## SWORDFISH/ALBACORA/PEZ ESPADA (XIPHIA GLADIUS)

**Availability: Apr - NOV**

Whole gutted, head on, frozen IQF.  
Size 0.5-1, 1-2, 2-3, 3-4,4-5, 5-6, 6-7, 7-8, 8-9,9 kg + 25 and 30 kg boxes.

Large, good quality has earned a big market in Europe. It is caught between the months of April and November and exported fresh to Europe in vacuum-sealed loins.

The proximity of the product to ensure that the Chilean coast is a product of very good quality, marketed in the US market in loins and steaks as required by the customer



## CHILEAN HAKE / MERLUZA AUSTRAL (MERLUCCIUS AUSTRALIS)

**Availability: May - Jul, Sept-Oct**

HGT - 1500 g-2000 g & 2000 g up in carton of 20kg.

Australis Hake is captured throughout the year and the fishing area is between parallels 40 S and 55 S. Most of the fishing is usually done between the months of May to October. In August, fishing is prohibited in order to protect spawning and conservation of the species. The hake is considered the queen of her family. It is undoubtedly the best in the varieties of hake in the world and some could even say it's the best fish in the world of white fish.

Australis Hake a very desired product especially in southern Europe, especially in Spain, Portugal and France. It is a large species with an average weight of 3 kg per unit. It is characterized by a very white flesh, firm texture and a very delicate flavor. Currently this is being marketed fresh and frozen, in fillets and portions and HG species. Meanwhile, products like tongue and cheeks are highly sought in different markets.

\*\*\*\*\* Packaging - 20 kg x 1100 ctn | FCL load - 22,000 kg \*\*\*\*\*





## CHILEAN SEA BASS (DISSOSTICHUS ELEGINOIDES)

Availability: Whole year around

This species is very deep cold water and is especially concentrated in the polar circle and along the coast of Chile, which makes her white meat and high fat. It certainly is an extraordinary product that has made it earn the recognition of the best chefs and restaurants in the world and also hold the award for the best fish in the world as some of the journals.

\*\*\*\*\* FCL load - 22,000 kg \*\*\*\*\*



## Whole Hon

Whole fish frozen gill on with vicera.  
Size 150 - 300 g, 200 - 300 g, 300 - 500 g, 500 -900 g & 900 g up



## CHILEAN JACK MACKEREL (TACHURUS MURPHYI)

Availability: Feb - Aug

Chilean jack mackerels are commonly 45 cm (18 in) long, though they can grow to 70 cm (28 in). They have elongated and laterally compressed bodies. The head is large with well-developed transparent protective membranes (the adipose eyelid) covering the eyes. The Chilean jack mackerel is an epipelagic fish that swims in schools around coasts and in the open ocean. Normally it swims at depths between 10 and 70 m, but it can swim as deep as 300 m.

\*\*\*\*\* Packaging - 20 kg x 1100 ctn | FCL load - 22,000 kg \*\*\*\*\*





## SPINY LIVE LOBSTER (JASUS FRONTALIS)

**Availability: Between the months of Oct and May**

The Lobster is found mainly in the Juan Fernandez archipelago and exported live to Europe and Asia. It is available from October to May and its meat is a unique flavor that has earned an international reputation. This product requires a very complex logistical starting with the mainland bring on a plane specially hired for that and that makes Valparaiso where they are given a rest period in pools containing sea water which is constantly renewed. After 2-3 days is living in special boxes exported to Asia and Europe mainly. Their average weight is 600-800 grams with an average size of 25 cm (without antennas).



## KING CRAB (LITHODES SANTOLLA)

**Availability: Jul - Nov**

Description: Wild Patagonian, Single Frozen, 100% Natural, Raw or Precooked  
 Sizes Whole king crab: 800 - 1000, 1000 - 1200, 1200 - 1400, 1400 - 1600, 1600 - 1800, 1800 - 2000  
 Sizes Cluster: 600gr under & 600 gr over  
 Master Case: White Cardboard box of 12kg variable weight

The largest & most impressive of all crabs caught in the globe. No other shellfish in the world projects a more elegant image or offers such a widespread appeal than King Crab. This valuable and desired crustacean is unmatched due to its sweet flavor and rich tender texture. It is prized gourmet crab with an outstanding look and delicious meat, which has a sweet buttery natural flavor, succulent taste and incredible delicate texture. In other words, it is simply a great sensual delicatessen experience.

\*\*\*\*\* Packaging - 10 kg x 1000 - 1100 ctn | FCL load - 10,000 - 11,000 kg \*\*\*\*\*



### Wings With Skin

Raw frozen block 10 kg / block,  
packed in  
polypropylene bags of 20 kg.



### Tentacles

Raw frozen block 10 kg / block,  
packed in  
polypropylene bags of 20 kg.



## CHILEAN CUTTLEFISH / GIANT SQUID (DOSIDICUS GIGAS)

**Availability: Jan - Aug**

White meat mollusk, who frequents the coasts of Chile. Pelagic species, which is found throughout the water column, depending on the time of day.

Its main markets are Spain, South Korea, the Philippines, Russia, China, United States, Mexico, Argentina, Thailand, Costa Rica.



### Fillet Without Skin

Raw frozen mold 10 kg / mold, packed in  
polypropylene bags of 20 kg.

\*\*\*\*\* Packaging - 10 kg x 2 blocks / 1100 bags | FCL load - 22,000 kg \*\*\*\*\*





## CHILEAN LOCOS (CONCHOLEPAS CONCHOLEPAS)

**Availability: Jan - Jul**

Size: 2-4, 4-6, 6-8, 8-10, 10-12, 12-15, 15-20, unit per kg  
Packing: 5 kilo bags in box master of 20 kgs. (4 x 5 kgs)

Chilean abalone, also called locos, is a special seafood product particularly suited for the gourmet chef. It is harvested along the famed clean and unpolluted Chilean Pacific coast. Processed using the highest of international standards for quality control and the latest technology. They are also captured and produced under strict environmental standards in support of environmental sustainability and species protection.

\*\*\*\*\* Packaging - 5 bags x 5 kg / ctn x 880 ctn | FCL load - 22,000 kg \*\*\*\*\*



## SEA ASPARAGUS (ENSIS MACHA)

**Availability: Jan - Apr & Aug - Dec**

Bivalve mollusk that lives in sandy and muddy soft bottoms, from the shallow subtidal, to depths close to 20 m. It is distributed between Regions III and XII.

\*\*\*\*\* Packaging - 5 bags x 5 kg / ctn x 880 ctn | FCL load - 22,000 kg \*\*\*\*\*





● **VICTORIA LOCOS IN BRINE**  
**維多利亞智利樂可思**  
**CONCHOLEPAS CONCHOLEPAS**

Product of Chile. It is canned fresh from the waters of Southern Chile. High in protein. Great taste for variety of recipes.

Net weight 425g  
 Drained wt 200g

Size: 1,2,3,4,5,6,8



● **VICTORIA SEA ASPARAGUS IN BRINE**  
**維多利亞清湯鮑筍**  
**ENSIS MACHA**

Product of Chile. It is canned fresh from the waters of Southern Chile. High in protein. Great taste for variety of recipes.

Net weight 425g  
 Drained wt 160g

Size: 00 (21 pcs & below) 0 (22 - 40 pcs)  
 1 (41 pcs up)



● **VICTORIA PACIFIC CLAMS IN BRINE**  
**維多利亞清湯鮑貝**  
**GARI SOLIDA**

Product of Chile. It is canned fresh from the waters of Southern Chile. High in protein. Great taste for variety of recipes.

Net weight 425g  
 Drained wt 160g

Size: 00 (21 pcs & below) 0 (22 - 40 pcs)  
 1 (41 pcs up)



● **VICTORIA RAZOR CLAMS IN BRINE**  
**維多利亞貴妃鮑**  
**TAGELUS DOMBELL**

Product of Chile. It is canned fresh from the waters of Southern Chile. High in protein. Great taste for variety of recipes.

Net weight 425g  
 Drained wt 160g

Size: 1 (30 - 60 pcs) 2 (61 - 90 pcs)



● **VICTORIA LIMPETS IN BRINE**  
**維多利亞清湯小鮑**  
**FISSURELLA SPP.**

Product of Chile. It is canned fresh from the waters of Southern Chile. High in protein. Great taste for variety of recipes.

Net weight 425g  
 Drained wt 160g

Size: 0 (1 - 5 pcs) 1 (6 - 10 pcs) 2 (11 - 18 pcs)  
 3 (19 - 28pcs) 4 (29 - 36pcs) 5 (37 - 45pcs)